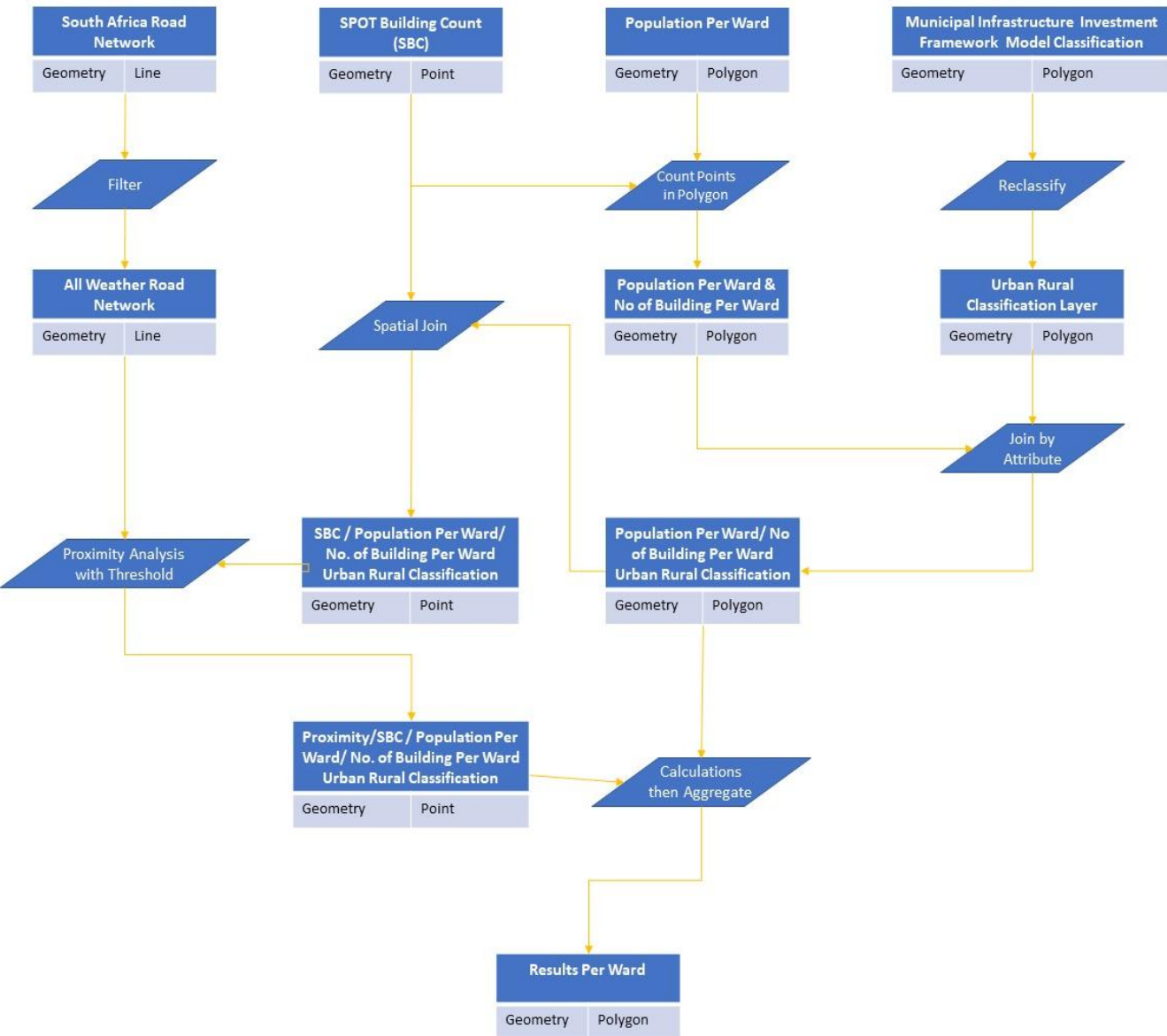


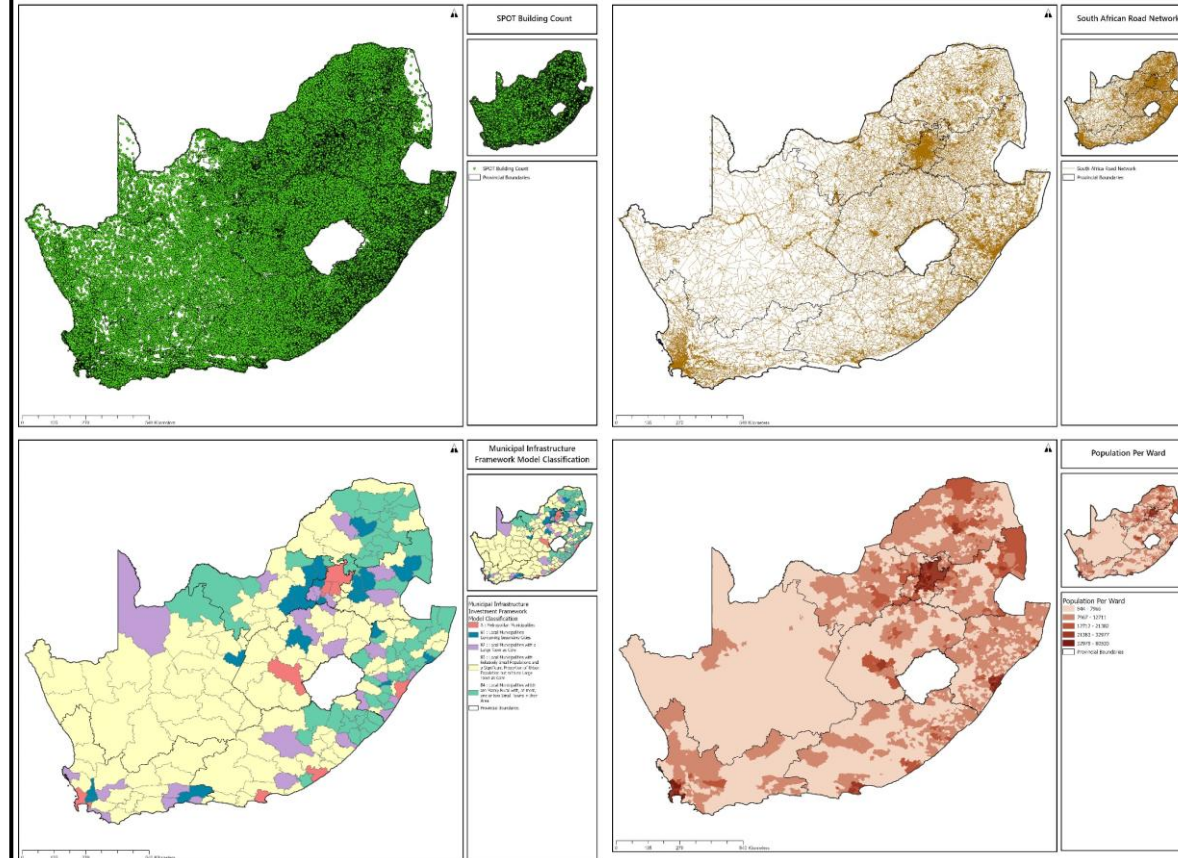
iNFRASTRUCTURE South Africa

Road Access Index
13 August 2025

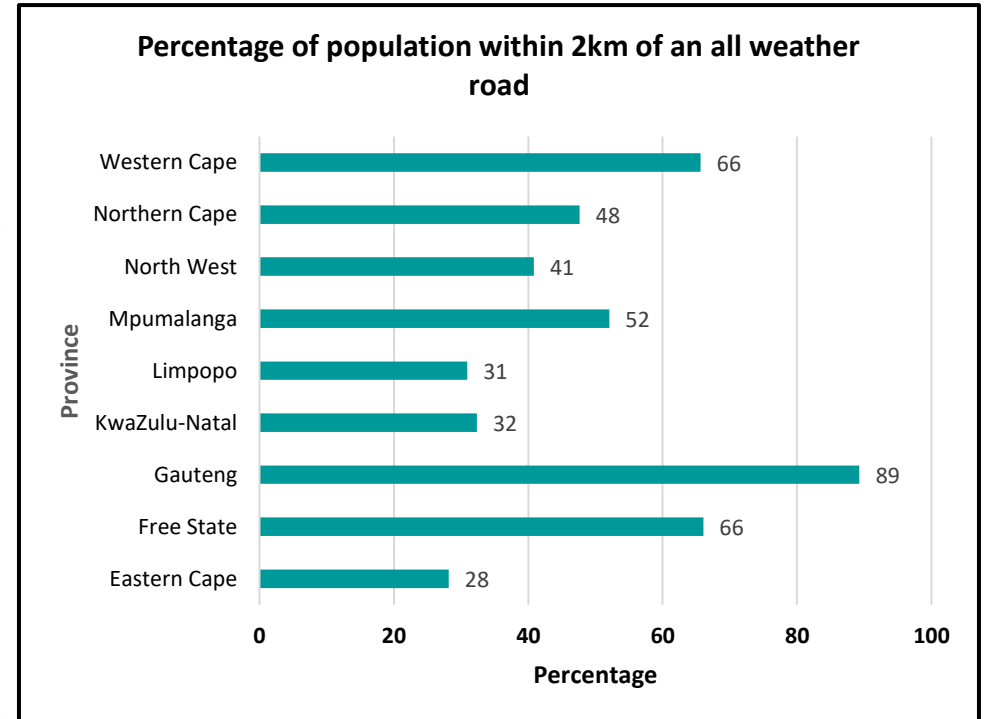
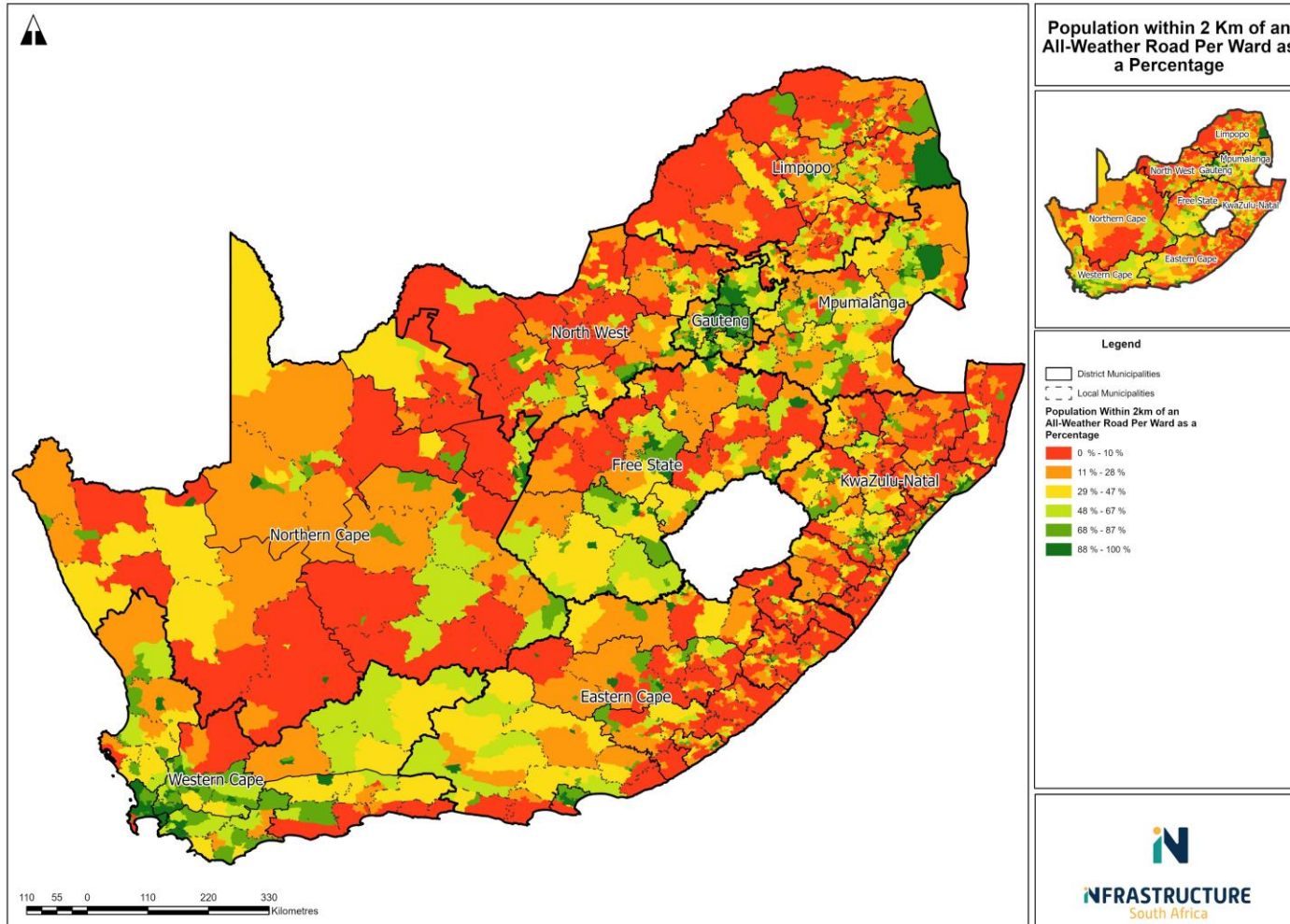
THE RAI PROCESS & INPUT DATASETS



Input Datasets



RESULTS



DISTRICTS WITH THE WORST RAI SCORES



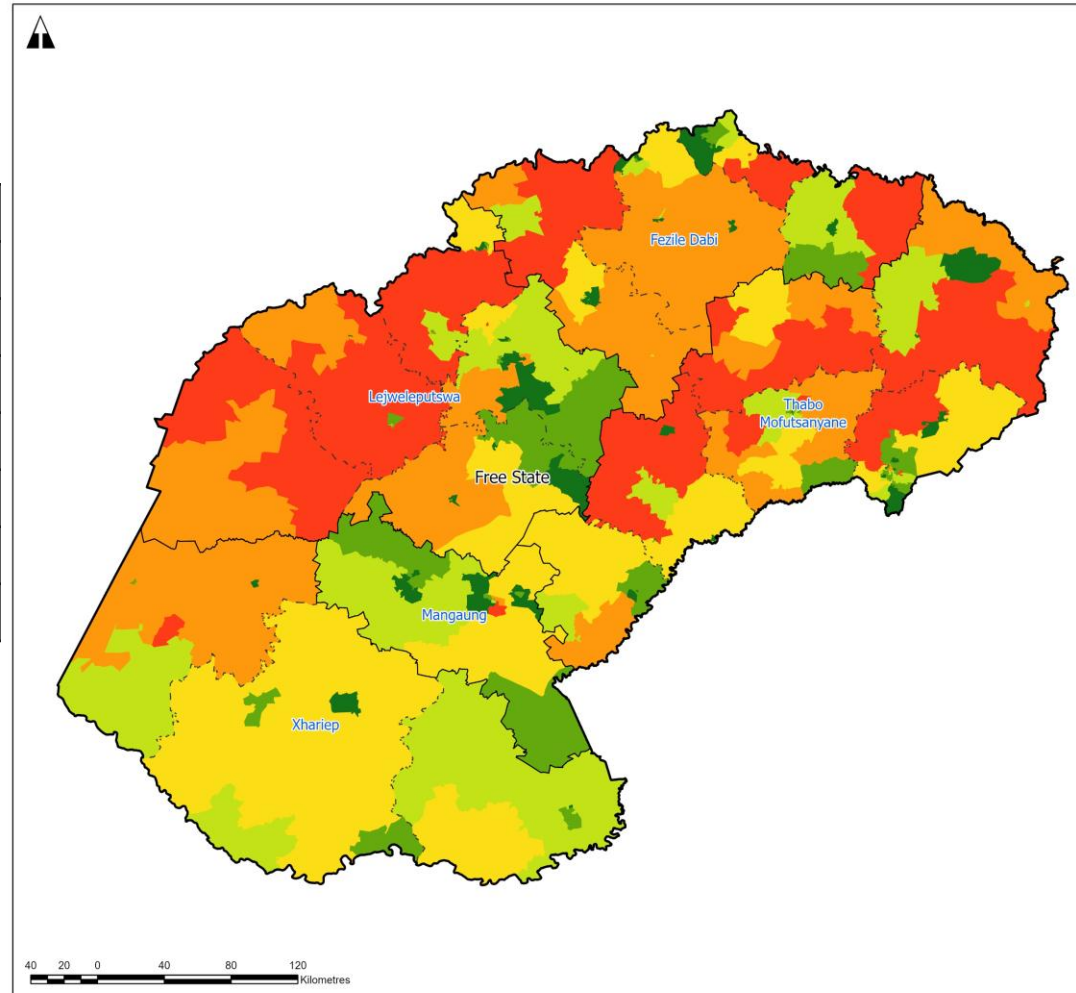
No	District Municipality	Province	RAI: Percentage of population within 2km of an all-weather road
1	Ugu	KwaZulu-Natal	9%
2	Umkhanyakude	KwaZulu-Natal	11%
3	Alfred Nzo	Eastern Cape	12%
4	Eden	Western Cape	15%
5	Amathole	Eastern Cape	15%
6	Zululand	KwaZulu-Natal	17%
7	John Taolo Gaetsewe	Northern Cape	19%
8	Sekhukhune	Limpopo	19%
9	O.R. Tambo	Eastern Cape	19%
10	Ngaka Modiri Molema	North West	22%

- The table summarises the top 10 districts and municipalities with the lowest population located within 2km of an all-weather road.
- At a district municipality level, KwaZulu Natal and Eastern Cape provinces have the highest number of districts in the top 10 worst RAI scores.
- The lowest districts have the lowest population located within 2km of an all-weather road.

FREE STATE SPECIFIC RESULTS



Free State	
District	RAI Percentage
Fezile Dabi	69,42
Lejweleputswa	71,47
Mangaung	72,42
Thabo Mofutsanyane	58,92
Xhariep	54,35
Provincial Average	66,06



Population within 2 Km of an All-Weather Road Per Ward as a Percentage

