



MEETING WITH AGRI SA

DATE: 19 AUGUST 2025



transport

Department:
Transport
REPUBLIC OF SOUTH AFRICA

Purpose of Meeting

Agri SA have indicated that the

- state of our roads plays a crucial role in the agricultural sector, impacting the transportation of goods and services, farm productivity, and overall economic well-being;
- meeting was requested to address the current conditions of our road infrastructure and explore potential solutions;
- Agri SA recognises and appreciates the renewed efforts the department has put into infrastructure development. However, there are ongoing challenges that require immediate attention. Poor road conditions not only hinder the efficient operation of farming activities but also pose safety risks and elevate costs for all stakeholders involved

Agri SA have also indicated that the goal of this meeting are to:

- Share insights and data that highlight the impacts of deteriorating road conditions on the agricultural sector.
- Discuss existing programs and policies that could be leveraged or adapted for improvement.
- Explore collaborative opportunities between the Department of Transport, Agri SA, and other relevant parties to develop sustainable solutions.

Overview of Roles and Responsibilities of the Road Authorities

Description	National Roads	Provincial Roads	Municipal Roads
Authority	<ul style="list-style-type: none"> • SANRAL 	<ul style="list-style-type: none"> • Provinces 	<ul style="list-style-type: none"> • Local Municipalities
Funding Model	<ul style="list-style-type: none"> • State Funds for non-toll network • Toll fees for State Tolloed network • Concessioners – parts of N3; N1; N4 • SANRAL has enabling legislation to borrow and raise funds through bonds for State Tolloed network projects 	<ul style="list-style-type: none"> • Equitable Share • Provincial Road Maintenance Grant <i>(supplementary funds by NDoT)</i> 	<ul style="list-style-type: none"> • Municipal Infra Grant
Systems	<ul style="list-style-type: none"> • In-house – Integrated Transport Information System (ITIS) • Mobile APPs for public to report • Mobile APPs for RRM Contractors to report back progress, with pictures (automated as part of verifications and processing payments) 	<ul style="list-style-type: none"> • Combination of in-house and Road Authorities outsource to external 3rd Party Service Providers, whilst some Municipal Road Authorities are having no systems • All Road Authorities have the option to use the national systems provided - ITIS and Mobile APPs • In future, by end of 2027, the NDoT will provide the Asset Management Tool for country-wide usage for all Road Authorities 	
Planning & Designs	<ul style="list-style-type: none"> • Combination of in-house and outsourcing to external 3rd Party Service Providers. • In-house teams are mainly responsible for oversight and verifications 		
Implementation	<ul style="list-style-type: none"> • Construction and maintenance is outsourced to external 3rd Party Service Providers. 	<ul style="list-style-type: none"> • maintenance is a combination of using in-house teams (sma; scale) and outsourcing to external 3rd Party Service Providers • Construction is outsourced to external 3rd Party Service Providers. 	

Challenges and Mitigation Strategies

Challenges	Mitigation	Remarks
Lack of Funding	Conditional Grants provided to Provinces and District Municipalities	PRMG is implementation support to provinces RRAMSG is planning support to District Municipalities
Lack of Decision Support Tools / Information Systems	SANRAL's Integrated Transport Information System (ITIS) and suite of Mobile APPs has been availed for use by all Road Authorities	In future, by end of 2027, the NDoT will provide the Asset Management Tool for country-wide usage for all Road Authorities
Poor Monitoring, Evaluation and Oversight	The Technical Interventionalist Team has been deployed to augment the NDoT's capacity	The Technical Interventionalist Team is doing an assessment and will develop the SOPs and conduct skills transfer to departmental officials

Overview of Support by Department of Transport

- Besides the funded allocated to SANRAL for the maintenance of the National Road Network (non-toll portfolio), the department is providing implementation support to provinces (supplementary funds) through the Provincial Road Maintenance Grant (PRMG) to cover:
 - rehabilitation of surfaced roads
 - surfacing of paved roads (overlay or reseal)
 - number of m² of blacktop patching (including pothole repairs)
 - re-gravelling of gravel roads;
 - blading of gravel roads;
 - upgrading of gravel roads upgraded (mainly funded from provincial equitable share budgets)
- In addition, all the 44 District Municipalities are supported with planning through the Rural Road Asset Management Systems Grant (RRAMSG) to:
 - collect condition data (paved and unpaved) of the municipal road networks within the boundaries of the District Municipality;
 - collect traffic data on selected intersections of the municipal road network;
 - collect data on the condition of structures (bridges and culverts) as per the Technical Methods for Highways Manual (TMH19); and
 - develop a Road Asset Management Plan (RAMP) in line with Technical Methods for Highways Manual (TMH22) to inform maintenance and investment via the Municipal Infrastructure Grant (MIG).
- In the case of Municipal Roads, there is funding support by CoGTA through the Municipal Infrastructure Grant; however, the NDoT supports
 - municipalities with planning and implementation of municipal roads projects in terms of the RRAMS data;
 - DCoG in the identification of projects to be funded from DCoG as a schedule 6, Part B
 - DCoG with monitoring municipalities' performance and compliance with conditions applicable to this sector

Overview of Support by Department of Transport

Provincial Roads Maintenance Grant	
Transferring department	<ul style="list-style-type: none"> • Transport (Vote 40)
Grant schedule	<ul style="list-style-type: none"> • Schedule 4, Part A
Strategic goal	<ul style="list-style-type: none"> • To ensure efficient and effective investment in provincial roads to implement the Road Infrastructure Strategic Framework for South Africa in line with the S'hamba Sonke Road programme and other related road programmes
Grant purpose	<ul style="list-style-type: none"> • To supplement provincial investments for road infrastructure maintenance (routine, periodic and special maintenance) • To ensure that all roads are classified as per the Road Infrastructure Strategic Framework for South Africa and the technical recommendations for highways, and the road classification and access management guidelines • To implement and maintain road asset management systems • To supplement provincial projects for the repair of roads and bridges damaged by unforeseen incidents including natural disasters • To improve road safety with a special focus on pedestrian safety in rural areas
Outcome statements	<ul style="list-style-type: none"> • Improve the condition and lifespan of provincial roads and level of service backed by a periodic five-year review of the road network conditions • Improved rates of employment and community participation through labour-intensive construction methodologies and skills development through the delivery of roads infrastructure projects

2025 MTDP Allocations

PRMG Budget Allocations

Province	Column A	Column B	
	2025/26	Forward Estimates	
		2026/27	2027/28
Eastern Cape	2 184 984	1 569 448	1 640 607
Free State	2 089 737	1 468 441	1 535 020
Gauteng	1 573 564	746 556	780 406
KwaZulu-Natal	3 462 816	2 448 772	2 559 801
Limpopo	2 055 765	1 317 204	1 376 926
Mpumalanga	1 672 581	994 497	1 039 588
Northern Cape	1 562 610	1 169 108	1 222 116
North West	1 679 822	1 050 608	1 098 244
Western Cape	1 569 564	1 054 211	1 102 009
Unallocated	-	5 428 509	5 673 990
TOTAL	17 851 443	17 247 354	18 028 707

- The following allocations are specifically and exclusively allocated for the construction of gravel roads upgraded to surface, roads refurbished and Welisizwe Rural Bridges Programme (allocated through Budget Facility for Infrastructure):

	Rehabilitation	Refurbishment	Welisizwe Rural Bridges
○ Eastern Cape:	R443 million		R244 million
○ Free State:	R487 million		R201 million
○ Gauteng:	R861million		
○ KwaZulu-Natal:	R881 million		R244 million
○ Limpopo:	R554 million		R244 million
○ Mpumalanga:	R479 million		R244 million
○ Northern Cape:	R447 million		
○ North West:	R476 million		R201 million
○ Western Cape:	R563 million		

Province	% PRMG Splits for Gravel Roads	% PRMG Splits for Paved Roads	Total % PRMG Split
Eastern Cape	10.13	3.15	13.28
Free State	7.48	4.94	12.42
Gauteng	0.50	5.81	6.32
KwaZulu Natal	9.78	10.94	20.72
Limpopo	5.03	6.11	11.14
Mpumalanga	3.32	5.10	8.41
Northern Cape	7.61	2.28	9.89
North West	5.13	3.76	8.89
Western Cape	3.22	5.70	8.92
Sub-Total	52.21%	47.79%	100 %

Provinces must ensure that:

- approved grant funded projects are published as part of the Estimates of Provincial Revenue and Expenditure through the provincial legislative processes
- projects are selected using road asset management system as the primary source of information
- final road asset management plan and Table B5 project list are submitted to NDoT, the relevant provincial treasury and National Treasury by 30 January annually, indicating all the required planned targets

SANRAL BROAD ECONOMIC & DEVELOPMENT IMPACT



SANRAL 27,501 km network
4,4% of South Africa's total road network



SANRAL Infrastructure Investment
Contributes GDP and trade \pm R40 bn*



Carries 34% of all annual
vehicle traffic



Job Creation
Direct employment = 35,594*



SANRAL network carries up to 70% of all
long-distance freight



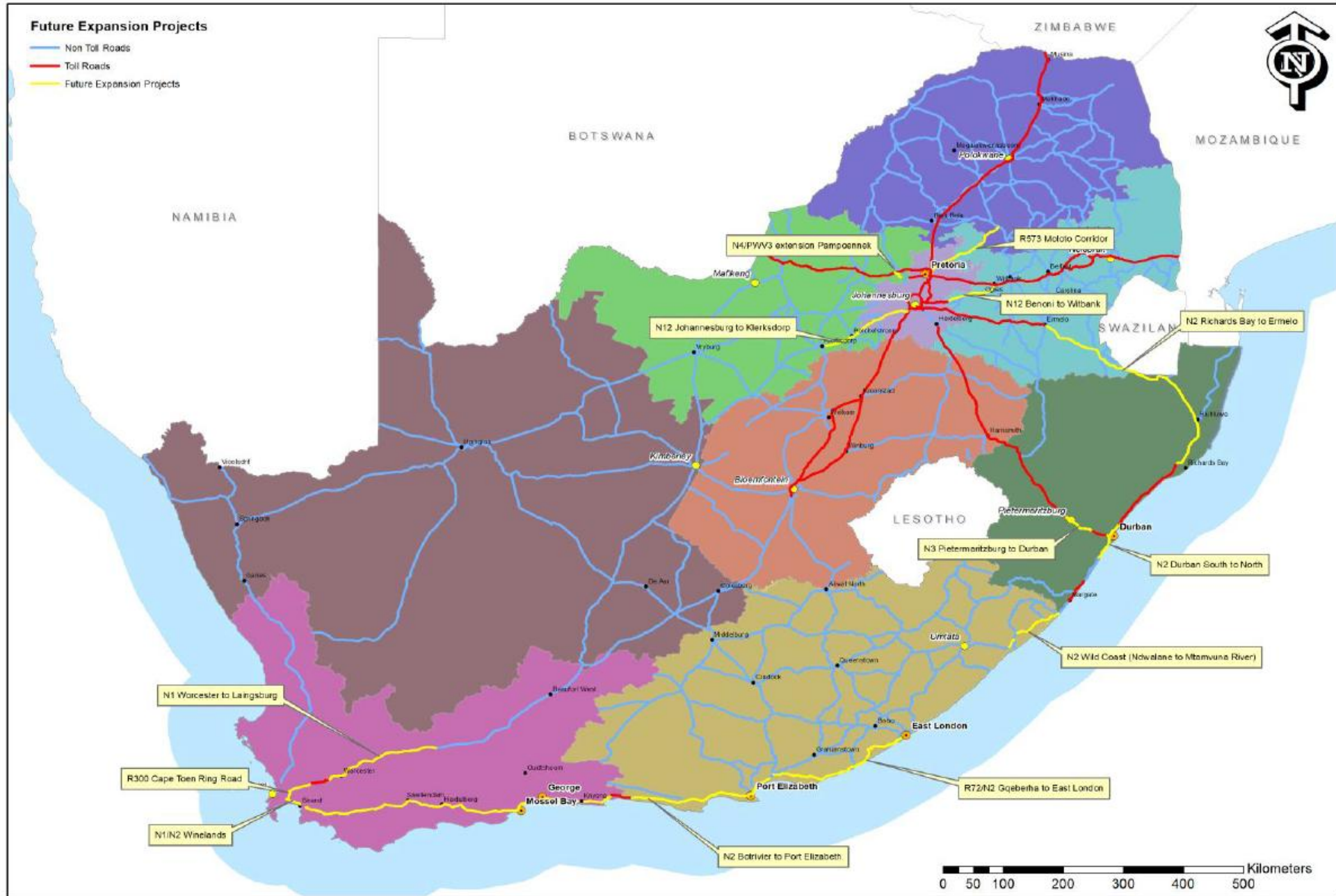
Rural upliftment, SMME support
2,012 SMME*

*Figures are based on pre-audit 2024/25 Financial Year performance

SANRAL 3 - YEAR MTEF PROJECT PIPELINE

Project Type	Non-Toll		Toll		Total	
	Design	Construction	Design	Construction	Design	Construction
Routine Maintenance	189	125	69	76	258	201
Periodic Maintenance	181	78	31	16	212	94
Special Maintenance	130	49	22	6	152	55
Community Projects	134	35	14	0	148	35
Strengthening	34	15	7	3	41	18
Improvements	140	52	16	2	156	54
New Facilities	185	48	40	6	225	54
Total Projects	993	402	199	109	1192	511
	1395		308		1703	
Total Value MTEF (R'million)	62 909	65 155	27 711	11 456	90 619	76 610
	128 063		39 167		167 230	

Current Major Capacity Expansion Projects (In construction and Planned) on Existing SANRAL Network



SANRAL MTEF BUDGET – TOLL

DESCRIPTION R'000	2025/26	2026/27	2027/28
	Approved Budget	Approved Budget	Approved Budget
OPERATING EXPENDITURE - ROADS	6,086,970	5,140,607	3,977,040
Ad Hoc Maintenance	143,540	178,405	38,824
Routine Operations	2,840,497	2,638,896	3,256,144
Periodic Maintenance	2,026,129	1,584,647	343,158
Special Maintenance	1,076,805	738,659	338,914
CAPITAL EXPENDITURE - ROADS	5,873,632	8,185,325	11,126,104
Sundry Capital Expenditure	229,037	253,380	280,310
Community Development	185,440	264,800	120,430
Strengthening	553,523	714,239	1,230,649
Improvements	2,448,048	3,372,986	3,989,795
New Facilities	2,431,289	3,552,263	5,488,701
Land Acquisition	26,295	27,657	16,219
EXPENDITURE GRAND TOTAL	11,960,602	13,325,932	15,103,144

SANRAL NON-TOLL MTEF BUDGET – CONSOLIDATED

DESCRIPTION R'000	2025/26	2026/27	2027/28
	Approved Budget	Approved Budget	Approved Budget
OPERATING EXPENDITURE - ROADS	25,076,164	22,725,412	17,734,223
Ad Hoc Maintenance	1,161,936	1,637,105	885,466
Routine Operations	9,114,930	6,278,793	6,116,228
Periodic Maintenance	10,977,568	10,336,924	4,899,673
Special Maintenance	3,821,730	4,472,590	5,832,857
CAPITAL EXPENDITURE - ROADS	32,365,752	36,061,584	32,471,591
Sundry Capital Expenditure	625,237	603,369	775,418
Community Development	1,770,537	2,049,949	1,460,968
Strengthening	2,593,015	1,990,673	1,669,188
Improvements	17,883,681	19,222,722	16,002,310
New Facilities	9,414,397	12,111,900	12,489,307
Land Acquisition	78,885.00	82,971.24	74,398.65
EXPENDITURE GRAND TOTAL	57,441,916	58,786,996	50,205,814



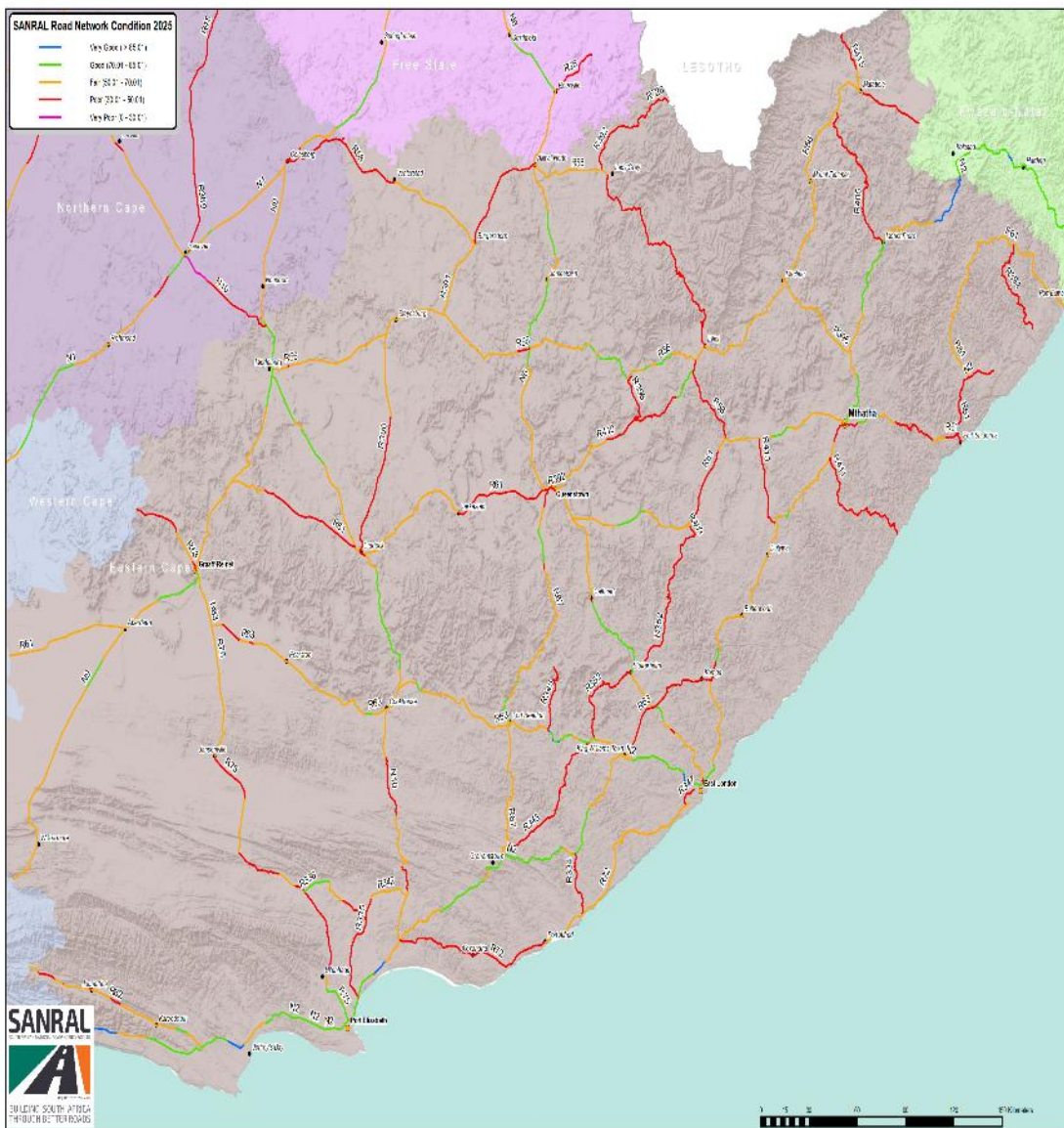
transport

Department:
Transport
REPUBLIC OF SOUTH AFRICA

THANK YOU

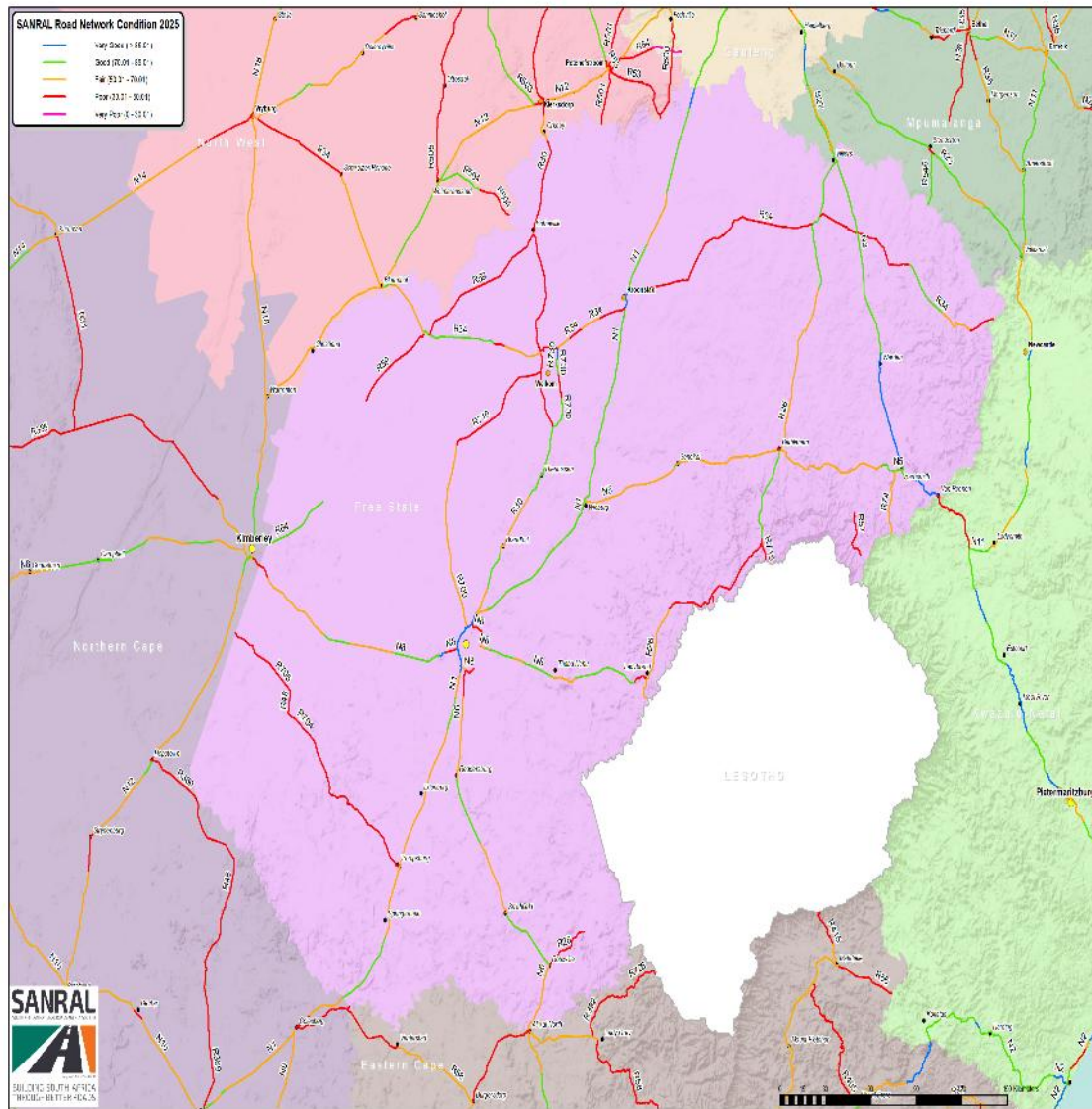
ADDITIONAL INFORMATION

SANRAL 3-YEAR PROJECT PIPELINE – EASTERN CAPE



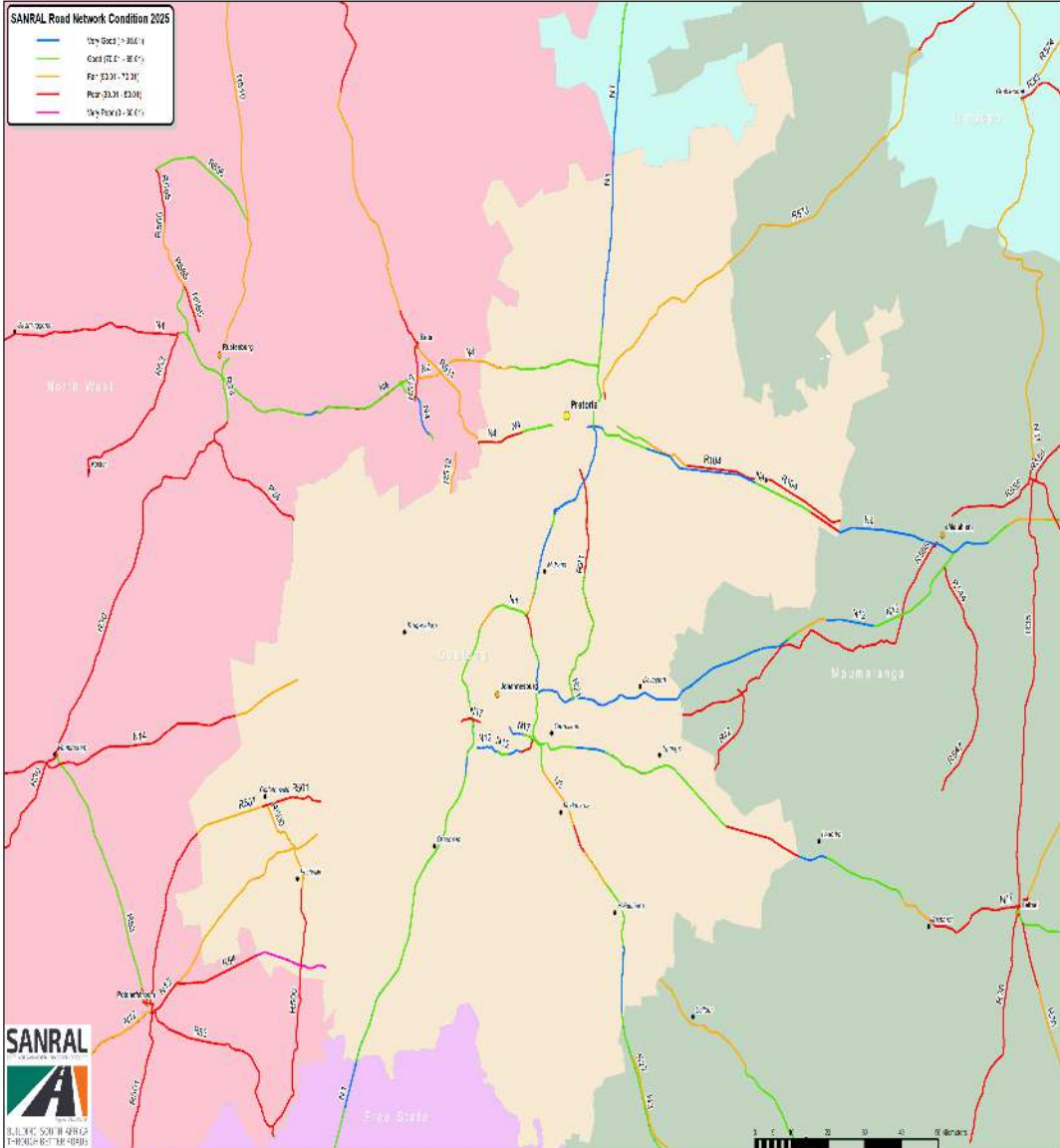
Project No	Project Description	Actuals as at 31 May 2025	3 year MTEF Total
Totals	320	R 26 948 369 506	R 57 647 985 949
N.002-200-2016/2	DNNBN: N2WCR - Msikaba bridge	R 2 992 523 979	R 4 189 658 425
N.002-200-2016/3	DNNS2: N2WCR-Msikaba to Mtentu Bridg	R 1 378 183 735	R 3 567 418 954
N.002-201-2023/1	DNNBN: Mtentu bridge and roads (3.7k	R 628 560 717	R 3 428 560 717
N.002-200-2011/1	DSRGS: Mt Frere to Ngqweleni River	R 1 063 919 122	R 2 097 790 328
R.061-060-2016/1R	DIAHV: All Saints to Baziya Phase 2	R 4 782 302	R 1 681 439 060
R.063-156-2014/1	DIAHV: Design R63 Bhisho to N6 Bridg	R 614 181 091	R 1 651 095 191
R.056-080-2023/1	DIAHV: Matatiele to KZN Border 38.6k	R 895 085 191	R 1 609 970 191
N.002-200-2016/1	DNNS2: N2WCR-Lingeni-Msikaba Bridge	R 86 091 073	R 1 561 091 073
R.063-160-2016/1	DIAHV: Phase 1 km21.7 to km 43.64	R 591 790 771	R 1 401 177 306
N.002-180-2018/1	DNURT: Viedgesville to Mthatha	R 39 989 674	R 1 259 989 674
N.002-190-2013/1	DILPS: Nqadu to Mzeke rivers and Dan	R 1 149 625 601	R 1 149 625 601
N.002-190-2016/1	DNNS2: N2WCR - Ndwalane l/c-Ntafufu	R 41 617 072	R 1 106 617 072
R.335-010-2017/1	DIAHV: Motherwell to Addo Phase 1	R 313 139 618	R 984 529 478
R.063-130-2015/1	DIAHV: Fort Beaufort to Alice	R 980 704 962	R 980 704 962
N.002-145-2016/1	DIAHV: Phase3: Ght to Fish River Pas	R 696 832 978	R 866 848 862
N.002-201-2016/1	DNNBN: N2WCR - Mtentu bridge	R 633 018 421	R 839 763 421
N.002-145-2012/1	DIAHV: Green River to Buffalo River	R 815 397 155	R 815 397 155
R.056-067-2020/1	MSPGS: Indwe-Maclear(0-58.3)+(0-68.5	R 697 666 486	R 697 666 486
R.072-030-2014/1	DIAHV: Port Alfred to Fish River	R 694 165 671	R 694 165 671
R.067-050-2016/1	DIAHV: Swart Kei Riv to Queenstown	R 685 509 234	R 685 509 234

SANRAL 3-YEAR PROJECT PIPELINE – FREE STATE



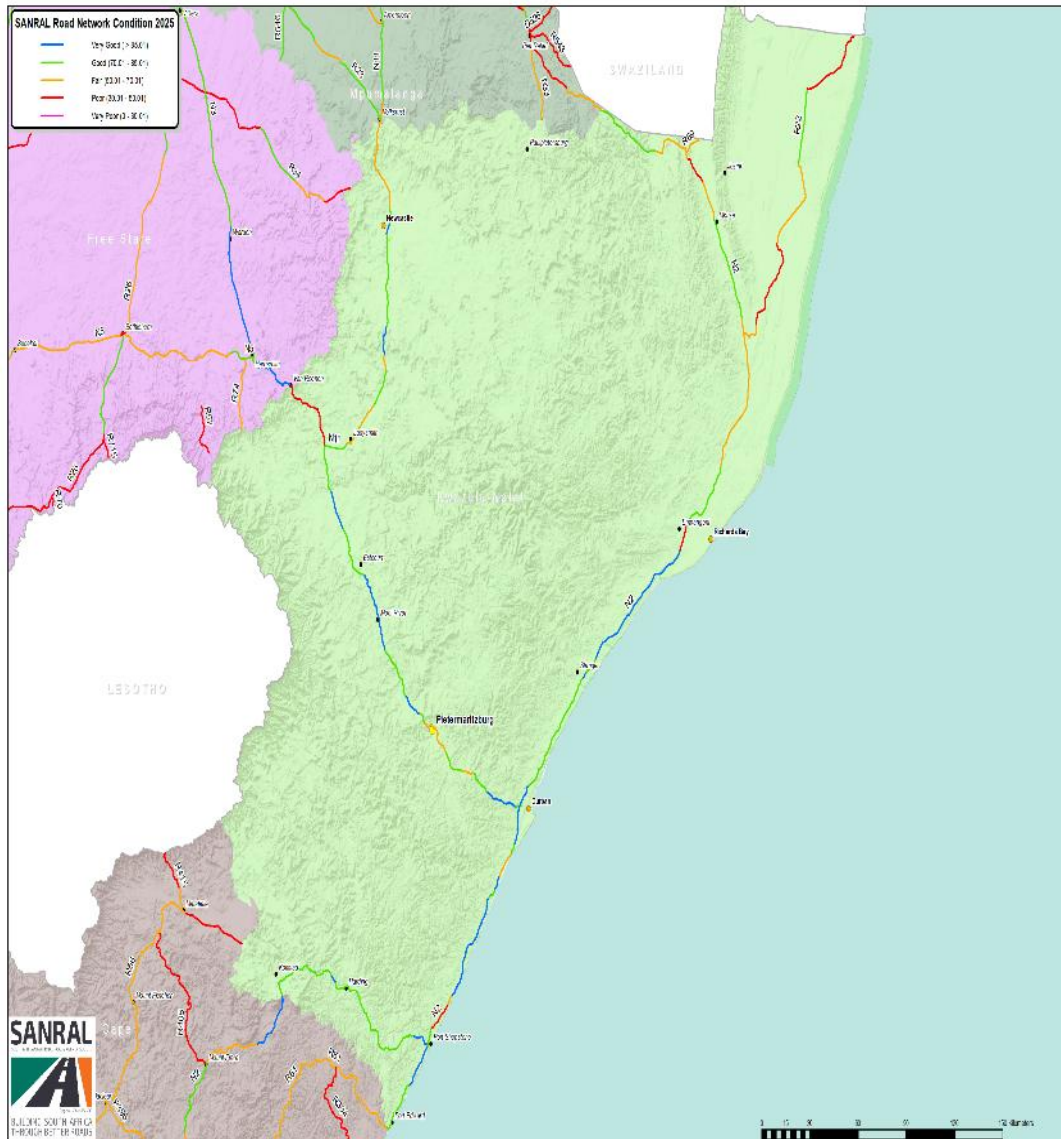
Project No	Project Description	Actuals as at 31 May 2025	3 year MTEF Total
Totals	168	R 4 398 562 123	R 20 912 466 880
N.001-160-2018/1R	DNURT: Zandkraal to Winburg South	R 93 203 739	R 1 906 386 266
N.001-160-2025/2R	DNURS: Zandkraal/33.8 - Scotland/55	-	R 1 534 744 852
N.001-180-2018/1	DNURT: Heuningspruit - Koppies	R 23 730 679	R 944 002 679
R.034-060-2018/1	DSRGA: Upgrade Welkom to Kroonstad	R 18 231 566	R 759 631 566
X.004-130-2024/1	MONRM: R26/6-9,R34/11-12,R74/1	R 663 673 588	R 679 135 091
N.001-180-2023/1	DNURT: Koppies to Engen Kroonvaal Pa	-	R 560 625 000
N.001-150-2013/1	DSRGA: Sydenham - Glen Lyon	R 528 425 733	R 528 425 733
N.001-150-2024/2	MSPGA: Sydenham 28.5 to Glen Lyon 62	R 1 533 897	R 511 771 617
N.008-120-2017/1	DSRGS: Thaba'Nchu North - Tweespruit	R 226 499 659	R 434 789 659
N.005-012-2018/1R	MPRS2: Vaalpenssprt/1/31-Senekal/2/4	R 151 324 136	R 410 813 032
N.001-156-2020/2R	MSPGS: N1/16 KM12.84 - KM 32.2	R 89 130 843	R 370 397 886
N.001-170-2018/1	DNURT: Westleigh - Heuningspruit	R 13 391 325	R 366 287 172
X.004-145-2025/1	MONRM: R704/1&2, R705/1&2, R48/7, R64/1	R 97 752 748	R 322 752 748
N.001-156-2020/1R	MSPGS: N1/15 KM62.3 -N1/16 KM12.84	R 40 825 372	R 320 825 372
X.004-127-2024/1	MONRM: R34/7-10, Kroonstad to Vrede	R 287 748 001	R 319 236 141
X.004-128-2024/1	MONRM: R34/3-5, Bloemhof to Odendaal	R 312 083 677	R 313 453 677
X.004-142-2026/1	MSPGA: New FS declared roads	-	R 310 000 000
R.034-090-2026/1	MSPGS: R57 Heilbron and R26 Frankfort W	-	R 302 000 000
R.057-010-2025/1	MSNRS: Embankment Repair km 9.26	-	R 300 000 000
N.005-010-2026/1R	MPRS2: N5/1 Winburg - Vaalpensspruit	R 1 797 117	R 287 708 891
N.001-180-2022/1	MPRS2: N1/18 km 0.0 to km 29.2	R 4 180 860	R 284 605 054

SANRAL 3-YEAR PROJECT PIPELINE – GAUTENG



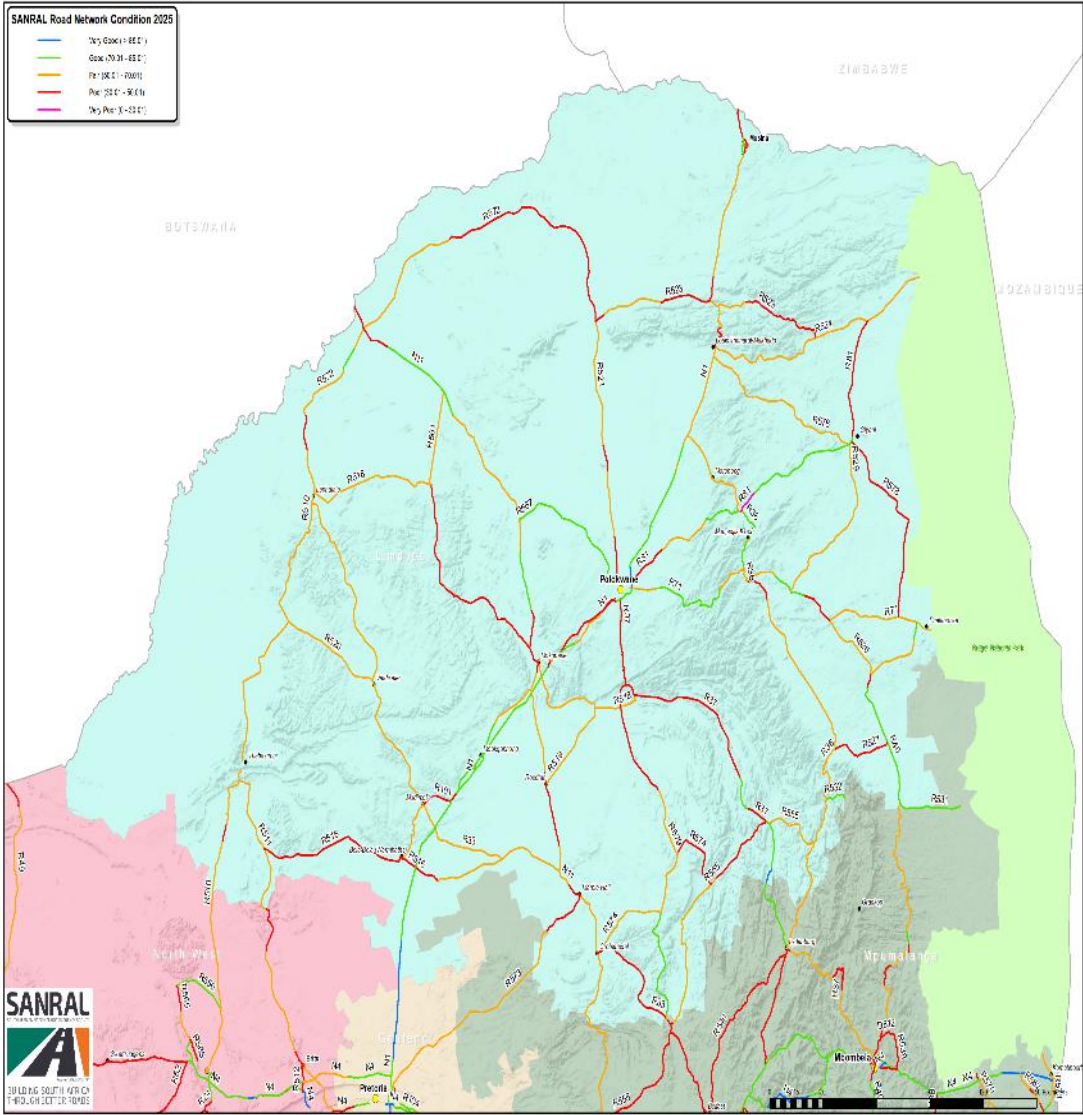
Project No	Project Description	Actuals as at 31 May 2025	3 year MTEF Total
Totals	124	R 3 595 793 624	R 17 786 317 091
R.573-010-2021/1	DNURT: Upgrade km 37.8 to km 48.6	R 6 644 904	R 1 107 327 679
N.001-201-2021/9	MPRAC: Buccleuch to Brakfontein	R 537 027	R 900 055 110
N.001-210-2019/9	MPRAC: Brakfontein to Scientia	R 503 006	R 871 617 788
R.573-010-2020/1	DNND2: Baviaanspoort rd-Stormvoël 2.	R 12 007 465	R 838 147 123
R.021-020-2020/9	MPRAC: Olifantsfontein to Hans Stryd	R 950 345	R 770 095 915
N.003-120-2020/9	MPRAC: Geldenhuys to Buccleuch	R 10 624 595	R 709 541 077
N.017-020-2018/1R	MPRMC: Rifle to Tonk Meter	R 26 300 479	R 632 200 123
R.021-010-2017/8	DSCPR: Pomona rd to Olifantsfontein	R 426 920 747	R 631 680 793
N.003-120-2019/9	MPRAC: Heidelberg Rd to Geldenhuys	R 343 922	R 628 005 780
N.001-200-2020/9	MPRAC: 14th Avenue to Buccleuch	R 1 674 931	R 604 017 848
N.003-110-2018/2	MSPGA: Balfour I/C to Dwars in die w	R 3 298 017	R 532 998 017
R.573-010-2021/2	DNURT: km4.6-9.8&N4 ext. R573toN1(7.	R 2 952 071	R 486 627 210
N.001-200-2021/9	MPRAC: Golden Highway to 14th Avenue	R 2 123 195	R 477 736 957
N.017-023-2019/1	MPRAC: R29/Springs to R50/Leandra I/	R 3 175 066	R 401 043 562
N.001-192-2018/1	MOTCT: Grasmere CTROM	R 1 184 361	R 378 886 405
R.573-010-2024/2	DNURT: Upgrade from km 31 to km 37.8	R 4 316 069	R 337 210 680
R.573-010-2023/1	DNURT: Sefako Makgato to R573 2.4-4.	R 5 818 738	R 310 522 319
X.002-117-2019/1	MOTTM: FMS Gauteng Operations	R 278 818 961	R 278 818 961
N.001-190-2017/1	MSPCF: Klein Rietspruit to N12/Potch	R 273 890 425	R 273 890 425
N.012-190-2022/9	MPRAC: Gillooly's to Tom Jones	R -	R 247 970 721
X.002-117-2019/9	MONTM: FMS Gauteng Operations	R 74 679 479	R 229 513 151

SANRAL 3-YEAR PROJECT PIPELINE – KWAZULU NATAL



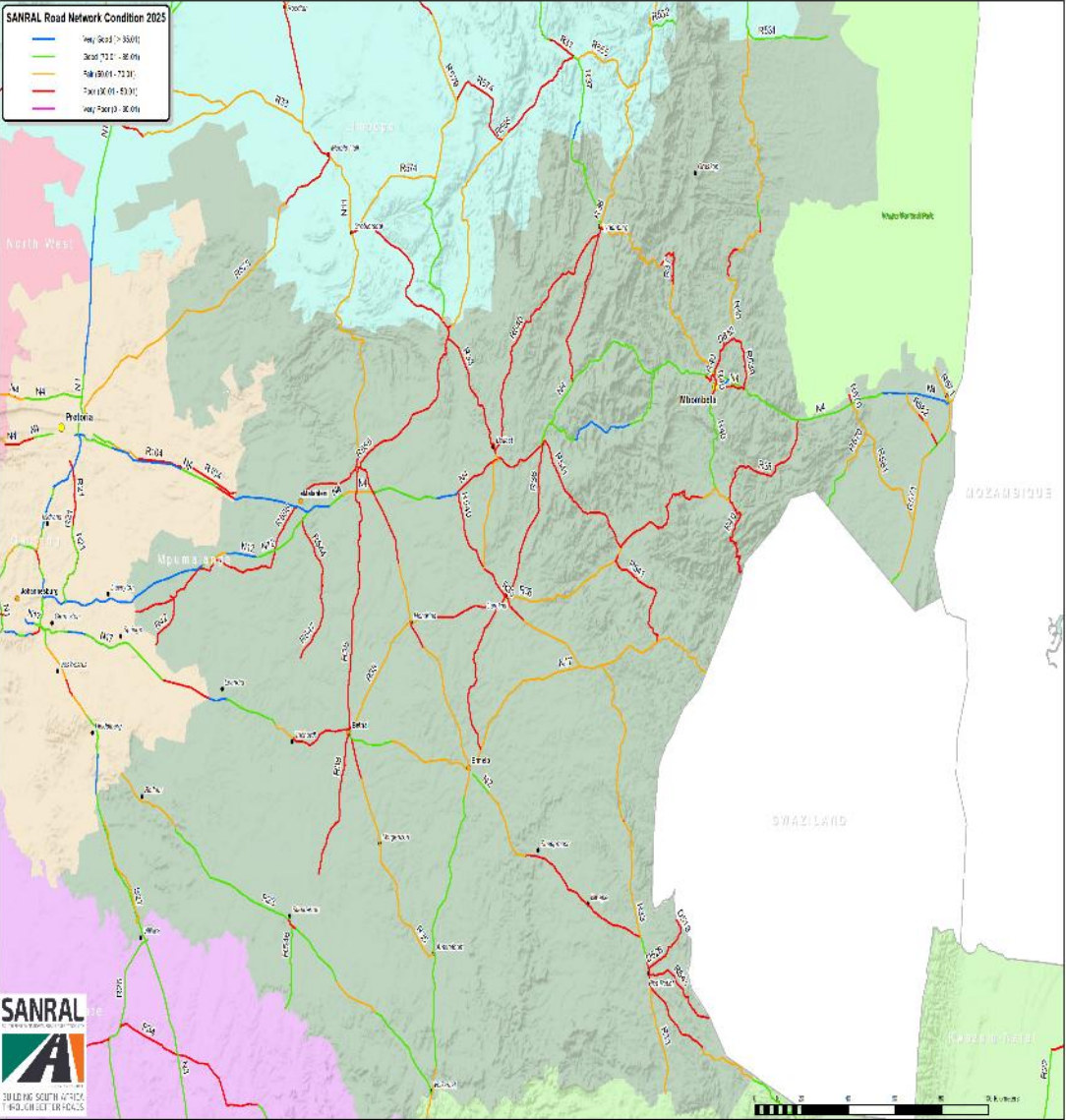
Project No	Project Description	Actuals as at 31 May 2025	3 year MTEF Total
Totals	309	R 26 978 602 229	R 74 070 464 756
N.003-020-2017/7	DIAHV: Key Ridge - Hammarsdale	R 1 853 878 011	R 6 123 504 740
N.002-250-2024/1	DICIC: Capacity Imp. - EB Cloete(Con	R 1 905 848 734	R 5 225 848 734
N.003-010-2017/9	DICIC: Westville Viad. - Paradise Va	R 1 549 686 114	R 4 869 306 567
N.003-012-2017/1R	DICAL: Marianhill Plaza - Key Ridge	R 47 051 444	R 3 729 768 038
N.003-020-2023/1	DICAL: Hammarsdale to Uitkomst	R -	R 2 562 423 773
N.003-020-2017/9	DICAL: Dardanelles - Lynnfield Park	R 2 443 195 945	R 2 556 195 945
N.003-030-2017/8	DICAL: Gladys Manzi to New England I	R 960 948 634	R 2 479 454 750
N.003-020-2017/8	DICAL: Cato Ridge to Dardanelles	R 2 261 012 885	R 2 441 699 692
N.002-260-2018/9	DICAL: KwaMashu I/C - Mdloti I/C	R 1 633 904 462	R 2 204 904 462
N.003-023-2017/9	DICAL: Lynnfield to Ashburton I/C	R 2 103 505 245	R 2 183 505 245
N.003-030-2024/1	DICAL: Ashburton I/C - Murray Rd	R 708 081 818	R 2 168 081 818
N.003-010-2017/3R	DICAL: Paradise Valley - Marianhill	R 38 041 171	R 1 506 041 171
N.011-020-2015/1	DSRGS: Ladysmith S(0) - Elandslaagte	R 728 126 301	R 1 436 132 851
N.002-250-2025/1	DICIC: Upgrade Edwin Swales (Contractor)	R -	R 1 400 000 000
N.002-270-2025/1R	DICAL: Tinley Manor 19-New Guelderl	R 1 026 288	R 1 195 471 351
N.002-289-2012/1	DNURT: Mtunzini Plaza - Empangeni T-	R 1 163 822 974	R 1 163 822 974
N.002-278-2021/1	DSRGA: New Guelderland to Mtunzini T	R 6 362 914	R 1 160 662 914
N.002-223-2018/1	DNURT: Umtentweni I/C to Hibberdene	R 23 702 852	R 1 108 702 852
N.003-010-2019/1	DICAL: Marianhill Toll Plaza Upgrade	R 25 647 243	R 1 025 647 243
N.003-020-2017/6	DICAL: BP Garage to Cato Ridge	R 131 881 875	R 909 782 979
N.002-210-2020/1	DNNIN: New Kokstad I/C and TCC	R 822 653 293	R 847 653 293

SANRAL 3-YEAR PROJECT PIPELINE – LIMPOPO



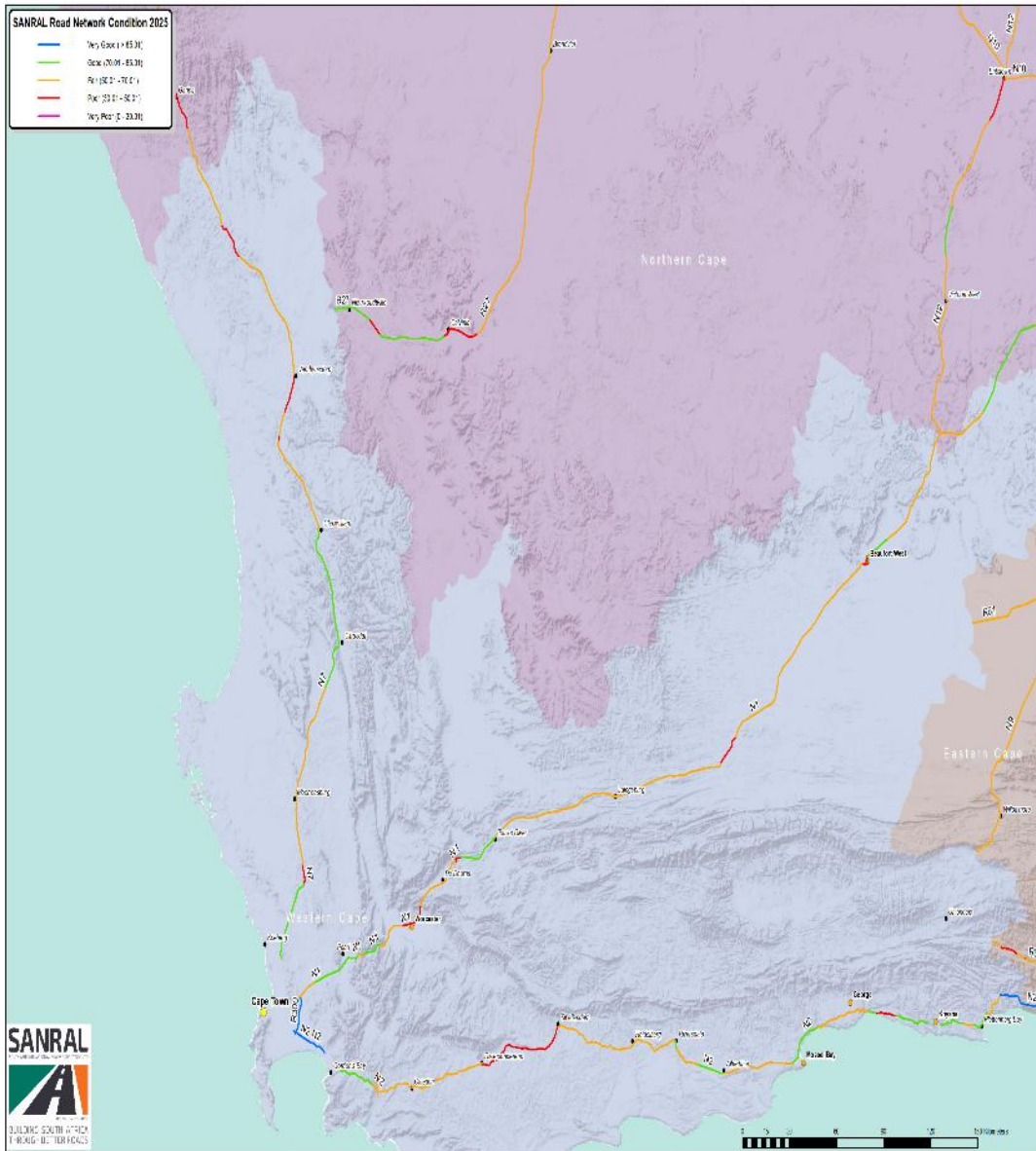
Project No	Project Description	Actuals as at 31 May 2025	3 year MTEF Total
Totals	228	R 12 908 100 216	R 30 825 359 793
R.101-080-2019/1R	DILPS: Bela Bela to Modimolle	R 51 256 701	R 1 668 982 095
R.516-010-2020/1R	DILPS: Toospruit to Bela Bela	R 46 678 653	R 1 503 925 341
R.037-020-2005/1	DILPS: Modikwa mine - Bugersfort	R 1 224 864 178	R 1 224 864 178
R.516-010-2019/1R	DILPS: R511 to Toospruit	R 10 179 676	R 1 164 067 431
N.001-290-2017/1	DILPS: Masekwaspoort to km 70	R 22 397 321	R 908 897 325
N.001-290-2005/1	DNND2: Musina Ring Road	R 799 681 708	R 799 681 708
R.510-020-2016/1	DILPS: Bierspruit to Thabazimbi	R 749 224 332	R 758 739 332
R.510-012-2016/1	DILPS: NW/LP Border to Bierspruit	R 675 637 982	R 746 042 047
N.011-130-2010/1R	DSRGS: Potgietersrus 8.345 to 24km	R 26 441 908	R 730 083 447
N.001-250-2024/1	DNURT: Nylstroom to Tobias Zyn Loop	R 6 551 841	R 556 287 729
N.001-249-2019/1R	MOTCT: N1 North Toll Operations	R 3 811 515	R 553 777 085
N.001-240-2024/1	DNURT: Kranskop Plaza to Modimolle	R 5 602 763	R 538 602 763
R.573-030-2019/1	DNND2: R573 Sec 3 km 6.5 to 13.3	R 520 138 786	R 520 138 786
R.573-030-2022/1	DNND2: R573 Sec 3 km 20.3 to 43.7	R 133 272 454	R 500 908 450
X.002-074-2019/1	MRNRS: Road Marking in NR - LP Prov	R 306 548 248	R 439 381 564
X.002-079-2019/1	MONRM: Molemole R36/R521/R81	R 363 589 739	R 397 808 397
N.001-230-2011/1	MOTCT: Kranskop Plaza operations	R 395 169 658	R 395 169 658
R.555-030-2020/1	DILPS: Steynsdrift to Old P169/1	R 284 704 540	R 386 723 088
R.573-030-2016/1	DNND2: Mathys Zyn Loop to Marble Hal	R 371 821 297	R 371 821 297
N.001-290-2018/1	DSRGS: Louis Trichardt to Masekwaspo	R 5 211 131	R 364 351 378
N.012-140-2020/1R	MPRS2: Bloemhof to Km 40	R 190 407 341	R 348 269 631

SANRAL 3-YEAR PROJECT PIPELINE – MPUMLANGA



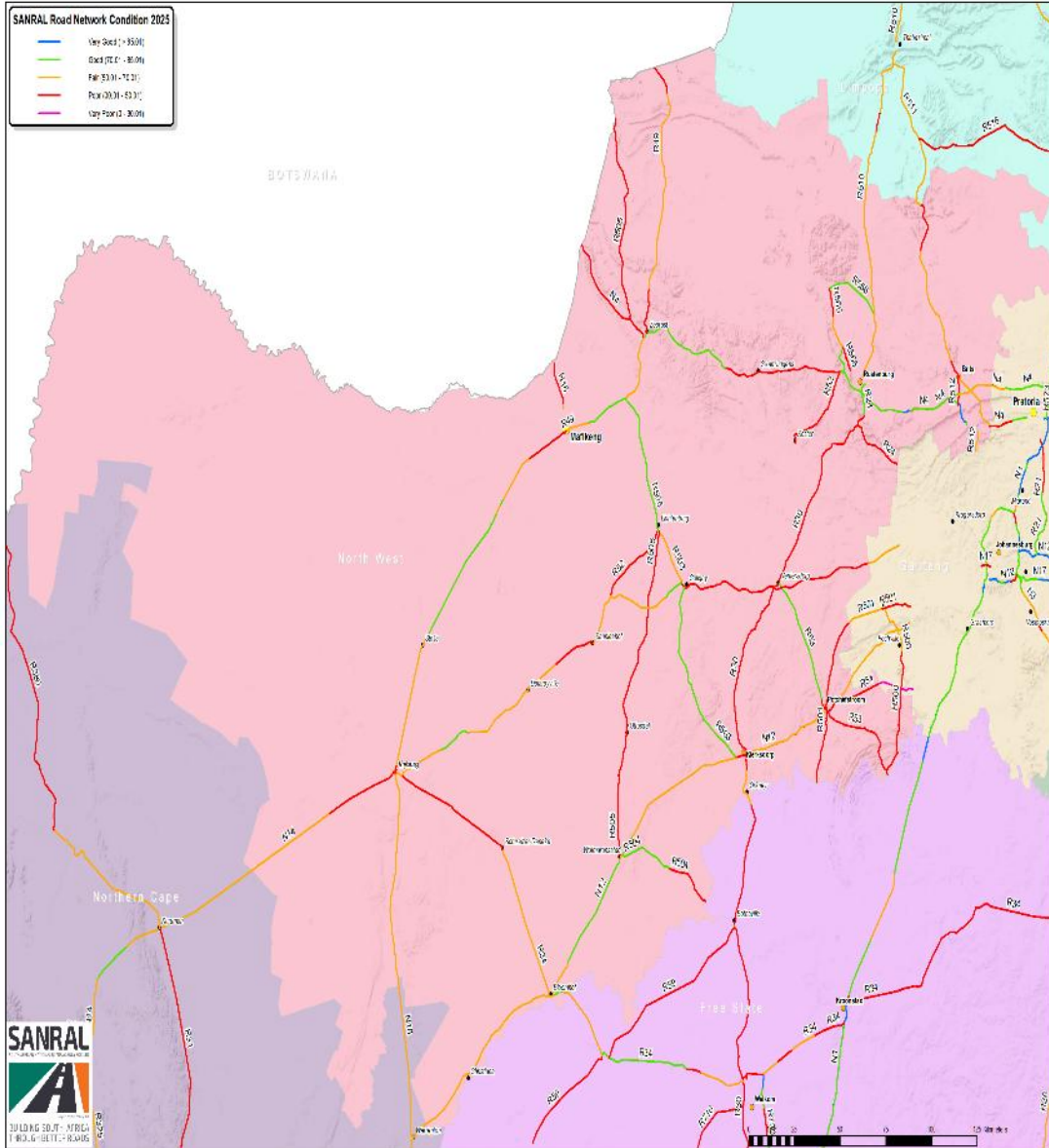
Project No	Project Description	Actuals as at 31 May 2025	3 year MTEF Total
Totals	186	R 11 011 213 491	R 26 151 800 334
N.002-340-2015/1	DILPS: Piet Retief to Verzamelings	R 156 159 137	R 2 793 972 429
N.002-340-2015/2R	DILPS: Leiden to Camden	R 56 775 373	R 2 649 665 795
N.011-090-2016/1	DILPS: Hendrina Power St. to N4 I/C	R 21 975 369	R 1 279 887 707
N.004-028-2006/1	MOTOC: Mpumalanga TCC Law Enforcemen	R 937 471 558	R 1 232 671 558
N.017-024-2011/1	MOTCT: N17 Toll Operations	R 916 465 566	R 916 465 566
N.017-024-2019/1	MOTCT: N17 East Toll Operations	R 6 018 387	R 759 681 048
N.002-340-2013/1	DNNBN: New Panbult Intersection	R 688 732 087	R 702 470 352
R.573-020-2019/4	DNND2: R573 S2 (km 24.7 - km 36.2)	R 689 008 731	R 689 008 731
R.023-020-2020/1	DNNBN: Completion 6 bridges and km 0	R 667 934 537	R 667 934 537
N.004-018-2017/1	MOTOC: TRAC TCC's Operations	R 146 041 767	R 417 231 184
X.002-097-2019/1	MONRM: Ermelo 1: N11/N2	R 410 160 304	R 410 160 304
X.002-091-2019/1	MONRM: Mkhondo N2/R33	R 402 038 959	R 407 038 959
R.555-020-2025/1	MSPGA: Middelburg(0) to Stofberg(59.24)	R -	R 364 159 307
X.002-093-2019/1	MONRM: Standerton R23/S27	R 355 851 212	R 355 851 212
X.002-094-2019/1	MONRM: Letaba&Giyani R36/R81/R578/R5	R 339 466 081	R 348 966 081
X.002-108-2019/1	MONRM: Mbombela N4/R38R37/R40	R 346 078 500	R 346 078 500
N.012-200-2019/2	MPRAC: Petroport to Ogies	R 335 420 158	R 340 706 883
R.035-020-2023/2R	MPRS2: Bethal (0.0) to Middelburg (7	R 2 047 872	R 335 152 446
R.573-020-2019/3R	DNND2: R573 S2 (km 13 - km 24.7)	R 18 206 723	R 314 301 832
X.002-107-2019/1	MONRM: Thaba Chweu R37	R 292 723 928	R 305 039 727
R.573-020-2016/1	DNND2: Moloto (D567) to Mathys Zyn L	R 287 503 899	R 287 503 899

SANRAL 3-YEAR PROJECT PIPELINE – NORTHERN CAPE



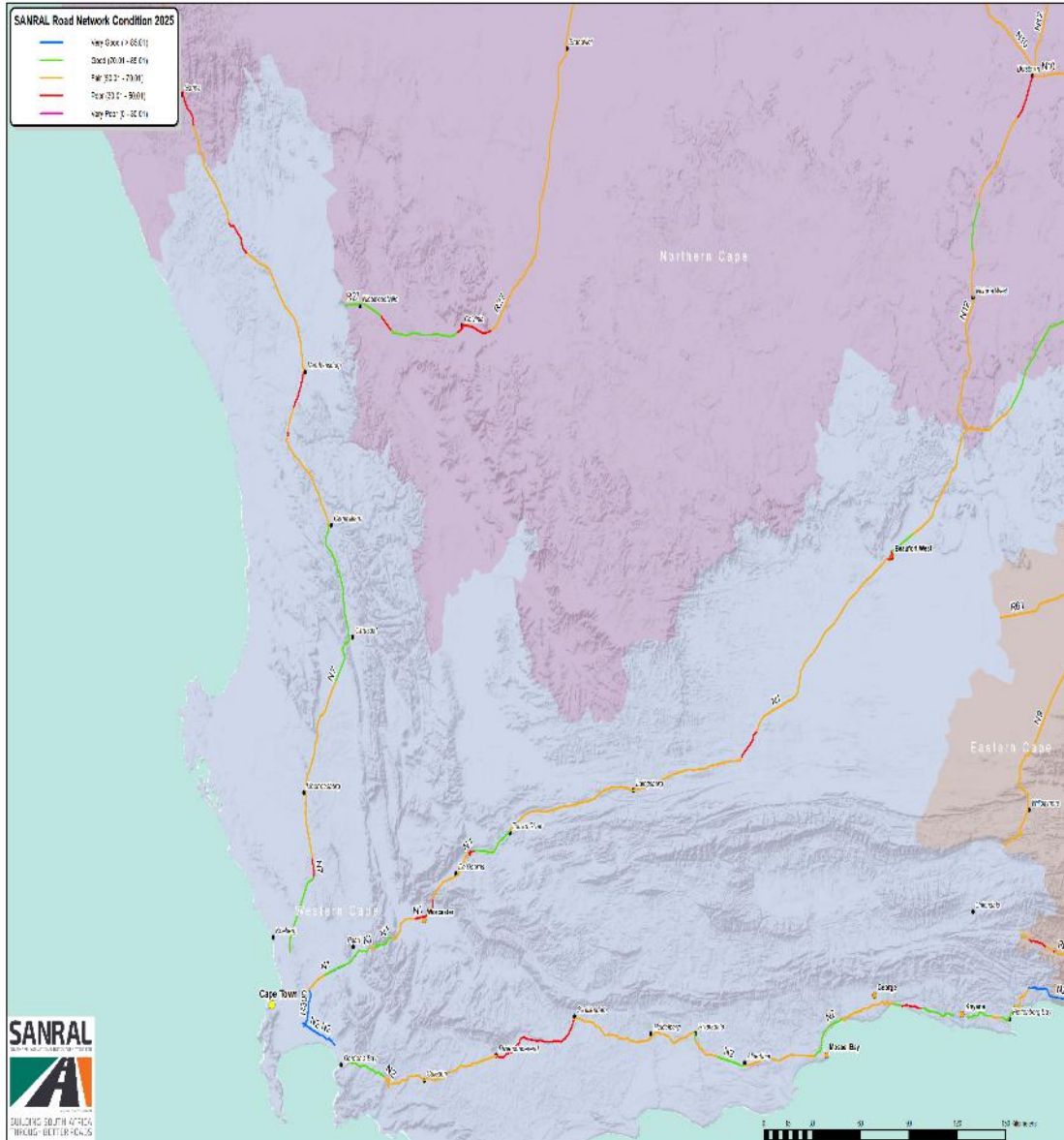
Project No	Project Description	Actuals as at 31 May 2025	3 year MTEF Total
Totals	148	R 3 674 464 425	R 10 893 601 911
N.012-090-2024/1R	MPRS2: Hopetown(0)-Kimberley(117.5)	R 2 862 925	R 513 708 195
R.031-060-2024/1R	MPRS2: Danielskuil/0-Delportshoop/78	R 751 589	R 494 196 024
R.027-078-2021/1R	MPRS1: NC/WC Border 41.12-Calvinia 6	R 266 371 974	R 427 977 374
R.027-090-2023/1R	MPRS1: Rletmondprt 73-Brandvlei 147.	R 877 148	R 256 277 985
N.010-070-2022/1	MPRS1: De Aar to Britstown	R 1 126 185	R 255 026 185
N.010-091-2023/1R	MPRS1: Nauga to Keukendraai(87.2)	R 1 750 511	R 241 757 349
N.010-101-2023/1R	MPRS1: Keukendraai-Uitkyk +N8/6(83.4	R 1 346 345	R 241 177 763
N.010-089-2023/1R	MPRS1: Schilders Pan to Nauga(101.3k	R 1 702 551	R 236 202 551
R.382-010-2024/1R	MPRS1: Alexander B/0-Port Nolloth/87	R 2 878 368	R 224 878 368
N.007-078-2023/1	MPRS1: Arakoop-Brakfontein (55.6km)	R 1 301 911	R 223 401 911
N.012-050-2022/1	MPRS1: Three Sisters-Victoria W (60.	R 2 397 639	R 218 297 639
N.010-080-2022/1	MPRS1: Britstown to Schilders Pan(61	R 2 624 830	R 200 324 830
N.012-080-2022/1R	MPRS1: Strydenburg to Hopetown (52.2	R 1 776 243	R 176 890 215
X.005-045-2022/1	MONRM: N7/7&8 & N14/1 & R382/1&2	R 94 556 201	R 161 376 544
N.001-100-2019/1	MSPGS: Richmond to Kantfontein	R 158 083 597	R 158 083 597
N.010-058-2023/1	MONRM: N10 Koppieskraal to Omdraai	R 86 982 268	R 157 580 279
N.014-067-2021/1	DIAHV: Inters Impr N14 Olifanthoek-K	R 156 412 263	R 156 862 263
X.005-046-2023/1	MONRM: N8 sec 8&9,N12 Sec 9-11& N18	R 128 214 843	R 153 024 843
N.001-101-2020/1	MPRS2: Bontebok to Hanover	R 148 338 588	R 148 338 588
N.010-050-2020/3	MPRS1: Luiperts kop to Hanover	R 111 411 151	R 147 731 816
N.001-091-2023/1	MONRM: N1/9-11 Schietkuil-Flaauwe Ko	R 82 861 432	R 144 550 899

SANRAL 3-YEAR PROJECT PIPELINE – NORTH WEST



Project No	Project Description	Actuals as at 31 May 2025		3 year MTEF Total
Totals	103	R	5 332 347 264	R 9 810 429 081
R.052-030-2020/1	DILPS: Koster to Rustenburg	R	248 546 188	R 1 398 052 998
R.511-030-2017/2	DSCPR: Beestekraal to NW/Limpopo Bor	R	354 068 076	R 588 068 076
N.001-201-2010/1	DNNTC: National FMS DBOM	R	465 428 039	R 465 428 039
R.504-030-2018/1	DSRAC: Wolmaranstad to Leeuwdoringst	R	383 797 417	R 383 797 417
N.012-170-2023/1R	MPRAC: Potchefstroom (4.38) to km 57	R	1 541 221	R 252 370 202
X.002-119-2019/1	MONRM: Merafong N12/N14/R54/R500/R50	R	251 513 126	R 251 513 126
X.002-127-2019/1	MONRM: Ventersdorp N14/R30/R53	R	225 430 221	R 225 430 221
X.002-067-2018/1	MONRM: RRM Rustenburg	R	205 175 581	R 205 175 581
R.504-040-2018/1	DSRAC: Leeuwdoringstad to NW/FS Bord	R	202 066 278	R 202 066 278
X.002-125-2019/1	MONRM: Mahikeng N18/R49/R505	R	189 909 053	R 192 909 053
X.002-070-2018/1	MONRM: Lichtenburg: R52, R503, R505	R	185 613 289	R 188 310 529
X.002-114-2019/1	MONRM: Rustenburg R510/R556/R565	R	183 867 793	R 183 867 793
X.002-072-2018/1	MONRM: Bloemhof: R34, R504	R	179 103 158	R 179 103 158
X.002-069-2018/1	MONRM: RRM on R53/2, 503/1, R30/7&8	R	177 008 466	R 177 008 466
X.002-068-2018/1	MONRM: RRM Potchefstroom	R	171 266 397	R 171 266 397
X.002-066-2018/1	MONRM: RRM Brits	R	170 450 132	R 170 450 132
N.014-110-2023/1R	MPRS1: Sannieshof 0 to Coligny 62.38	R	1 342 341	R 157 342 341
S.002-004-2018/1	DNNBN: Dr Moroka Level Crossing Brid	R	5 825 215	R 156 479 917
X.002-123-2019/1	MONRM: Naledi N14/N18/R34	R	118 606 351	R 149 103 952
N.004-130-2021/1	MOTOC: Operations of Bapong TCC	R	74 292 932	R 142 892 932
R.052-010-2019/1	MSPGS: Biesiesvlei to Lichtenburg	R	132 064 670	R 142 864 670

SANRAL 3-YEAR PROJECT PIPELINE – WESTERN CAPE



Project No	Project Description	Actuals as at 31 May 2025	3 year MTEF Total
Totals	160	R 6 780 720 985	R 17 352 560 674
N.001-010-2020/1	DNNTN: Upgrade Huguenot Tunnel North	R 135 891 293	R 2 562 170 010
N.002-070-2024/2	DNURT: Touw River to Die Vleie 6.78k	R 30 879 770	R 1 177 134 888
N.007-030-2020/2R	DILPL: Piketberg to Piekenierskloof	R 36 626 595	R 1 112 026 595
N.002-070-2019/1	DIAHV: Kraaibosch to Touw River	R 388 608 806	R 856 967 253
N.001-040-2020/1	DNURT: Monument River to Doornfontei	R 487 447 052	R 851 029 752
N.007-020-2020/1	DILPL: Rooikraal to Moorreesburg	R 703 549 446	R 704 049 446
N.001-012-2020/2	MOUTO: Ops & Maint. Huguenot Tunnel	R 281 513 281	R 394 034 931
N.002-020-2021/2	MPRAC: Houwhoek pass to Caledon(32.4	R 281 529 326	R 326 452 710
N.007-050-2023/1	MPRS1: Vanrhynsdorp-Bitterfontn (82.4	R 869 928	R 311 969 928
X.005-036-2019/1	MONRM: City of Cape Town Network	R 262 279 035	R 281 279 035
N.002-070-2020/3	MSNRS: Great Brak Slope Stability	R 265 624 002	R 265 624 002
N.001-010-2019/4	MPRAC: Koelenhof to Market str 22.65	R 260 595 113	R 260 668 319
N.002-040-2024/1R	MPRS2: Riviersonderend 0-Swellendam5	R 1 742 202	R 254 392 202
X.005-126-2022/1	MSNGT: WR_NT Geotech Eng Services	R 14 429 591	R 233 887 446
X.005-048-2023/1R	MONRM: City of Cape Town Network	R 6 318 579	R 224 041 912
N.002-060-2021/2	MPRS2: Dekriet to Gouritz River	R 140 338 219	R 222 342 442
N.002-060-2022/1	MPRS2: Gouritz river to Mossel bay w	R 213 664 327	R 213 664 327
N.002-078-2023/2	MONRM: Rondeheuwel to Nature's Valle	R 59 235 740	R 213 612 740
N.002-060-2026/1	MPRMO: Mosselb W(82.5)-Grootbrak(105	R -	R 208 500 000
N.002-070-2016/1	DICIC: Sandkraal/Thembaletu Interch	R 205 674 777	R 205 674 777
N.002-070-2023/2	DNNBN: Gwaing River 2nd Bridge	R -	R 204 295 506

SANRAL Community Development Projects – CONSOLIDATED

No	DESCRIPTION	PROVINCE	MUNICIPALITY	ESTIMATED COSTS
1	Upgrading of National Route 2 from Kwamashu Interchange, Section 25 (km 28.6) to Umdloti River Bridge, section 26 (km 14.0)	KwaZulu Natal	eThekwini Municipality	R1 251 167 732
2	The upgrading of the EB Cloete Interchange including a portion of N2 North and N3 West) N2 section 25 between Wiggins Road (km 16.0) to Umgeni Road I/C (km 20.7) and N3 section 1 between Sherwood I/C (km 8.4) to Westville Viaduct (mm 11.8)	KwaZulu Natal	eThekwini Municipality	R4 368 225 040
3	DICAL: The upgrade to National Route 3, Section 2, from Cato Ridge (km 20,2) to Dardanelles (km 26,6)	KwaZulu Natal	eThekwini Municipality & Mkhambathini Local Municipality	R 1 285 832 407
4	DICAL: Dardanelles - Lynnfiled Park	KwaZulu Natal	Mkhambathini / Msunduzi	R2,354,000,000
5	DICAL: Lynnfield Park-Ashburton	KwaZulu Natal	Mkhambathini / Msunduzi	R 1,228,039,031
6	DICAL Westville to Paradise Valley	KwaZulu Natal	eThekwini	R4 726 396 217
7	DIAHV: Key Ridge – Hammarsdale	KwaZulu Natal	eThekwini	R4 612 945 456
8	DNURS: New Jersey barriers	KwaZulu Natal	Mkhambathini	R160 869 565
9	DICAL: Edwin Swales IC (km 11.8) to south of EB Cloete IC (km 16.0)	KwaZulu Natal	eThekwini	TBC
10	DICAL: Gladis Manzi - New England Rd I/C	KwaZulu Natal	Msunduzi Municipality	R2 293 006 115
11	DICAL: Ashburton I/C - Murray Rd	KwaZulu Natal	Msunduzi Municipality	R2 808 671 049
12	DNNIN: Kokstad Interchange	KwaZulu Natal	Greater Kokstad Local Municipality	R678 500 207
13	DNNIN: Kokstad Interchange	KwaZulu Natal	Greater Kokstad Local Municipality	R 341 464.38
14	DNNIN: Kokstad Interchange	KwaZulu Natal	Greater Kokstad Local Municipality	R343 843.75
15	DNNIN: Kokstad Interchange	KwaZulu Natal	Greater Kokstad Local Municipality	R349 369.22
16	DNNIN: Kokstad Interchange	KwaZulu Natal	Greater Kokstad Local Municipality	R376 350.00
17	DNNIN: Kokstad Interchange	KwaZulu Natal	Greater Kokstad Local Municipality	R700 000
18	DNNIN: Kokstad Interchange	KwaZulu Natal	Greater Kokstad Local Municipality	R700 000
19	DNNIN: Kokstad Interchange	KwaZulu Natal	Greater Kokstad Local Municipality	R700 000

SANRAL Community Development Projects – CONSOLIDATED

No	DESCRIPTION	PROVINCE	MUNICIPALITY	ESTIMATED COSTS
29	DSRGS: Thaba'Nch u North – Tweespruit	Free State	Mangaung Metropolitan Municipality	R403 477 500
30	DILPS: Hendrina power station to N4	Mpumalanga	SteveTshwete	R900 000 000
31	DNND2: R573 - S3(km 0 to km 43.7)	Mpumalanga	Dr JS Moroka Local Municipality	R650,000,000.00
32	DILPS: Bela Bela to Modimolle	Limpopo	Modimolle Local Municipality	R650 000 000
33	DILPS: Toospruit to Bela Bela	Limpopo	Bela Bela Local Municipality	R650 000 001
34	DNND2: R573 - S3(km 0 to km 43.7)	Limpopo	Elias Motsoaledi Local Municipality	R650,000,000.00
35	RT: N11 sec 13 km 0 to 8.345	Limpopo	Mogalakwena Local Municipality	R450 000 000
36	DNURT: Upgr. Km 37.4-48.6	Gauteng	City of Tshwane	R1 271 760 568
37	DNURT: Upgr. - km 4-8.4 and N4/9 km 0-2.4	Gauteng	City of Tshwane	R1 876 410 221
38	DNURT: Monument river and Doornfontein	Western Cape	Laingsburg	R822 075 555
39	Kraaibosch and Touw River	Western Cape	George	R802 797 358
40	MPRAC: Houhoek to Caledon	Western Cape	Theewaterskloof	R254000000
41	PRS2: Hanover to Dieprivier	Northern Cape	Emthanjeni	R80 500 000
42	MPRS2: Noupoot and Wolwefontein	Northern Cape	Umsobomvu	R48 077 766
43	MSPGS: N10 to Bedford (R63/12 km 0-10 and km 16.9-20.7)	Eastern Cape	Blue Crane and Raymond Mhlaba	R134,750,070.70
44	DIAHV: Matatiele to KZN order (km 131-168.7)	Eastern Cape	Matatiele LM	R1,230,678,848.6
45	MSPGS: - Vlakfontein KM 18 to N6 i/c KM 35.04	Eastern Cape	Enoch Mgijima And Water Sisulu	R105,721,921.26
46	MSPGS N2/10 km 55.5 - km 74.5	Eastern Cape	Kouga	R196 500 000
47	DNURS : R336 CD - Kirkwood to Addo Phase 1 from km 16.75 to km 30.00	Eastern Cape	Sundays River	R1 114 188 928
48	DIAHV: Motherwell to Addo Phase 1 (R335/1km5.16- km27.5)	Eastern Cape	Nelson Mandela Metro	R1 068 843 569
49	DNNIN: Ndabakazi Interchange (N2/17km23-km24)	Eastern Cape	Mquma Municipality	R464 074 391
50	MPRS2: Mooiplaas to Komga (N2/16km49.9- km70.2)	Eastern Cape	Great Kei	R169 295 960
51	DIAHV: Phase3: Ght to Fish River Pass Sec13km92.6- 103.6 and Sec14km0-5.05	Eastern Cape	Makanda	R772 467 861
52	MSPGS: Cradock to Hofmeyr from km 0.00 to km62.50.	Eastern Cape	Inxuba Yethemba	R637 762 481
53	DIAHV: Design R63 Bhisho to N6 Bridg (R63/15km5.80- 28.04 and R63/16km0-1.0)	Eastern Cape	Great Kei	R1 771 769 603
54	DIAHV: N6 Bridge to N2 : Phase 1 km . 21.7 to km 43.64	Eastern Cape	Great Kei	R1 282 120 677
55	DNUSC : Upgrade of community roads in Molteno	Eastern Cape	Enoch Mgijima	R1 400 050 850
56	DNNBN: N2WCR - Mtentu Bridge Contractor (N2/21/km 0.00 to km 3.7)	Eastern Cape	\Lusikisiki	R3 733 224 103